

## INSTALLATION

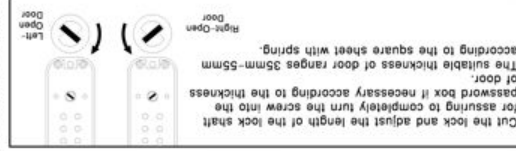
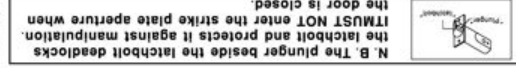
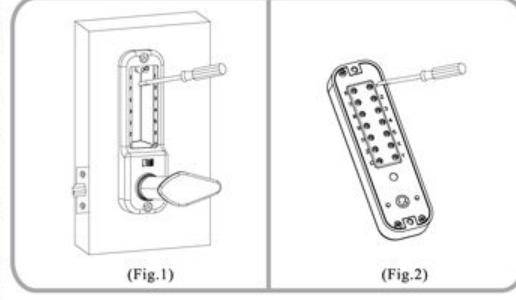
How to change the password:

\* Pattern 1:

This is a simple way to change the password. Remove the rear cover board of the inner door, insert the minus screw driver attached into the key slot, and turn it to change password (as shown in Fig. 1). For this purpose, make a square hole on the door first, which has the size same with that on the pad attached.

\* Pattern 2

Remove the latch first, turn the latch on the outer door backward, insert the minus screw driver attached into the key slot, and turn it to change the password (see Fig. 2).

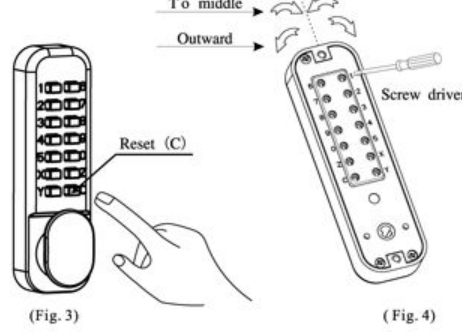


## INSTALLATION

## MODIFY PASSWORD

1. Change the password

It is relatively easy to change the password. Distinguish the password key from the common key first, as shown in Fig. 5, the half-round red key pointing outward is the password key and the key pointing to the middle of the latch is the common key. Then, press the reset key (C) on the front of the latch as shown in 3, and turn the latch backward as shown in Fig. 3, insert the screw driver into the minus slot inside the key hole, and turn it to change the password (see Fig. 4). Steps: change the former password into the common key first (i.e., turn the former password key by 190° (turn to the end) to the middle of the latch as shown in Fig. 4) to set the latch in no-password status. Turn the key to be set as the password outward by 190° as shown in Fig. 4. As the operation is completed, press the new password and turn the knob to check if the latch works in normal. If so, the password is changed successfully.



## MODIFY PASSWORD

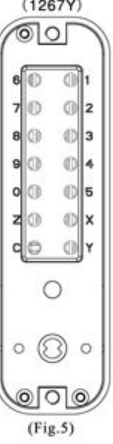
2. Example

For example, to change the former password (45X90) to the new one (1267Y), press the reset key (C) on the front of the latch as shown in Fig. 3, turn the latch backward, insert the screw driver into the minus slot inside the key slot, turn it to change the password as shown in Fig. 4. Turn (45X90) key by 190° to the middle first to change the password into the common key and set the latch in no-password status, then turn the (1267Y) key to be set as the new password outward by 190° as shown in Fig. 4. As the operation is completed, press the new password and turn the knob to check if the latch works in normal. If so, the password is changed successfully.

3. Notes

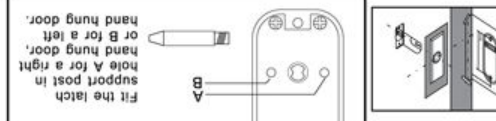
- 1-1: Do not press any key while changing the password.
- 2-2: The password can be set to 1-7 figures only, and 5-6 figures shall be best.
- 3-3: Distinguish the password key from the common key by the key indication on the back of the outer door. The half-round red key pointing outward is the password key and the key pointing to the middle of the latch is the common key (not password key) as shown in Fig. 5.
- 3-4: For example as shown in Fig. 5, 1267Y are the password keys and 345X90Z are the common keys (not password keys).
- 3-5: The ex-factory password is already set. It is strongly suggested to change the password by the user before the installation.

**! Please read this manual carefully and follow it for operation.**



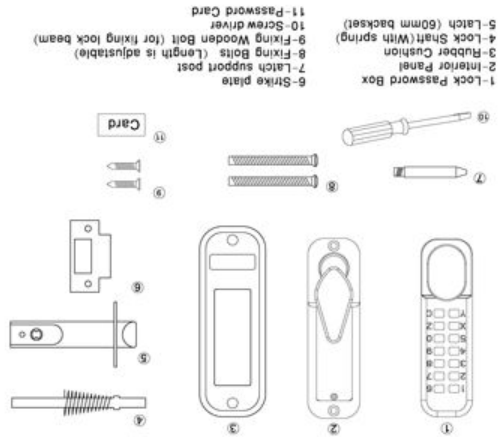
## POSITIONING AND FIXING THE LATCH

- Use a chisel to clear the line of 4x10mm holes into a single slot.
- Mark and drill all six 10mm holes.
- Appropriate line, depending on the backset of the latch (60mm Or 70mm).
- Tape the template to the door. Make sure that you told it along the



## CHANGING THE HANDING OF THE UNIT

## HANDING GUIDE



## MODEL ED20 - CONTENTS